



CED COATING AND POWDER COATING

ISO 9001 – 2015, PCB CERTIFIED COMPANY

▪ **About Bisco Coats**

- Founded in 1994, **Bisco Coats** began its journey in a modest 950 sq. ft. rented facility on Mount Road, catering to local customers with powder coating services for aftermarket auto accessories. Starting at a small scale, we quickly built a reputation for quality and reliability.

▪ **Our Growth and Expansion**

- **2005:** To meet increasing demand and support our growth, we moved to a larger 25,000 sq. ft. facility in Maduravoyal. This expansion allowed us to serve corporate clients and secure approvals from esteemed companies such as **Ashok Leyland, Volvo, TAFE, and Royal Enfield.**
 - **2010:** We advanced further by launching a state-of-the-art **E-coat plant**, utilizing cutting-edge **CED (Cathodic Electrodeposition) technology** to deliver superior surface finishing solutions.
 - **2015:** With the vision to scale new heights, we acquired a 4-acre property in **Tiruvallur district**, where we built a 100,000 sq. ft. state-of-the-art facility. This new location enabled us to expand our powder coating capabilities with:
 - Batch-type manual lines
 - Semi-automation lines
 - Fully automation lines
- ## ▪ **Our Commitment to Excellence**
- From humble beginnings to becoming a trusted partner for major corporations, **Bisco Coats** has continually evolved to meet industry standards and customer expectations. Our journey reflects our dedication to innovation, quality, and customer satisfaction in the surface finishing domain.

LOCATED
 VAYALLOOR ROAD, ULUNDAI,
 CHENNAI 602 105.



QUALITY MANAGEMENT SYSTEM

Certificate of Registration



This is to Certify That The Quality Management System of

BISCO COATS

SURVEY NO.318/2B, VAYALLOOR ROAD, ULUNDAI VILLAGE,
 TIRUVALLUR – 602 105, TAMIL NADU, INDIA.

has been assessed and found to conform to the requirements of

ISO 9001:2015

for the following scope :

POWDER COATING & ELECTRO DEPOSITION FOR FERROUS AND
 NON-FERROUS METAL.

Certificate No	22DQJE61	Issuance Date	: 09/05/2022
Initial Registration Date	: 09/05/2022	Date of Expiry*	: 08/05/2025
1st Surve. Due	: 09/04/2023	2nd Surve. Due	: 09/04/2024



of the
DIRECTOR
ROHS Certification Pvt. Ltd.

B-7, 1st Floor, Sector-2 Noida, Gautam Buddha Nagar, UP-201301
 e-mail : info@rohs-certification.co.in | website : www.rohs-certification.co.in
 The Registration is not a Product Quality Certificate. *Subject to successful completion of surveillance audits. Visit for verification on www.rohs-certification.co.in
 Certificate is the property of ROHS and return when demanded



EXCELLENCE AWARD FROM WABCO INDIA



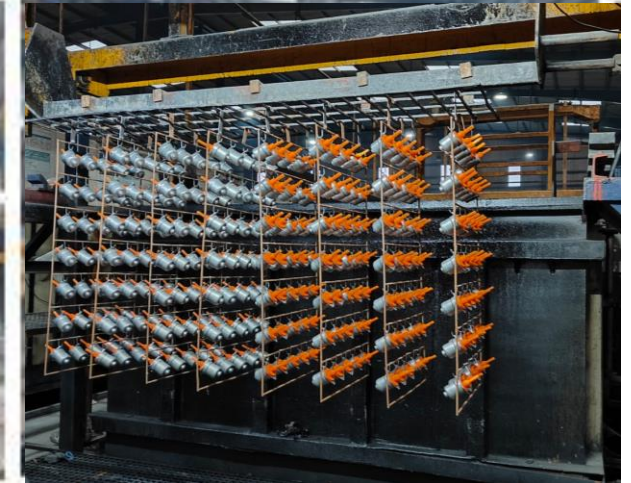
PLANT CAPACITY & DETAILS

- Total plant capacity: 1,00,000 Sq. Ft
- Powder and ED coating unit: 75000 sq. feet
- For future expansion space -25000 sq ft
- At **Bisco Coats**, we have a comprehensive setup designed to cater to diverse coating needs with precision and efficiency.
- **Facility Setup:**
 - Batch-type manual powder coating lines----- 5
 - Semi-automatic powder coating lines-----3
 - Fully automated powder coating lines -----1
 - Fully automated CED coating lines -----1
 - Batch-type manual Paint Stripping lines-----1
- **Pre-Treatment (PT) Line:**
 1. **Dip System:** 13-tank process line with **calcium-modified phosphate (Hot)** technology. optimized for coating applications
 2. **Spray System:** 10-tank process line with **zinc phosphating**, optimized for coating applications.
- Note: We have automated CED plant with a latest sixth generation global CED technology from PPG ASIAN PAINTS And it is the 13 tank process line with hot tri- cationic phosphate process

OUR FACILITIES

CED PLANT - CATHODIC ELECTRODEPOSITION

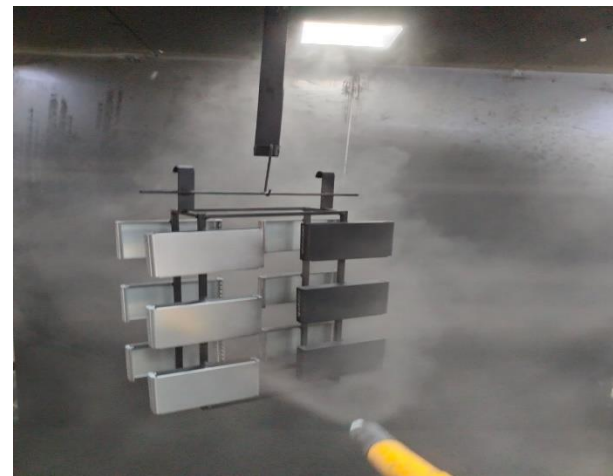
- PLC controlled unit
- Individual CED line with 3600 liter's tank capacity
- Coating capacity 100 sq. Ft/Load in 10 mints
- Two Auto Transporters each with 1 Ton capacity
- Working area 15000 sq. Ft for CED plant
- Tank size is 2100x1200x1200
- Preparation Stage: Parts are first cleaned and pre-treated before entering the CED line. This stage ensures good adhesion of the coating.
- Electrocoating: The parts are submerged in the 3600-liter tank filled with an electrocoating solution. An electrical current is passed through the tank, causing the coating material to be deposited onto the metal surface. This process ensures uniform coating coverage.
- Drying and Curing: After the electrocoating process, the parts move to the auto conveyor oven, where they are cured using controlled heat. The frequency drive adjusts the oven's heating parameters, ensuring that the parts are properly cured.
- Transport: The auto transporters move the parts through various stages, ensuring the smooth flow of items throughout the production line.



OUR FACILITIES

FULLY CONVEYORIZED AUTO PLANT- POWDER COATING:

- 10-tank process line with spray **zinc phosphating**, optimized for Powder coating applications.
- Fully automated powder coating lines designed for high-volume production, capable of handling components with a maximum size of **3' x 5' x 5'**. These lines feature **multiple booths** for seamless color changes on the same line, ensuring efficiency and flexibility. The system is equipped with **reciprocators** for automated application and **manual operating guns** for precision work.



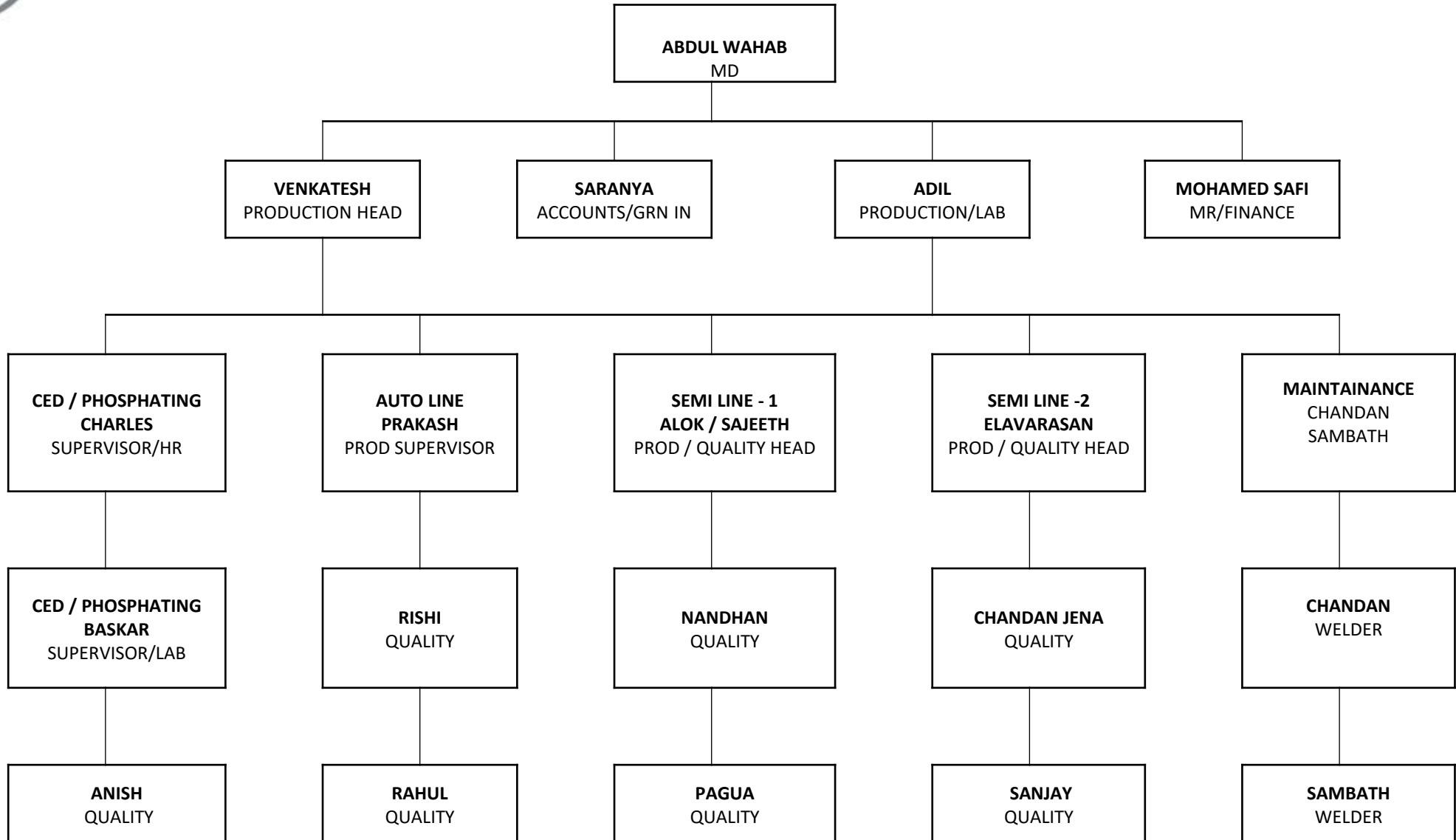
SEMI-AUTOMATIC LINES

- The semi-automatic lines feature an oven with an overall size of- **45' x 2' x 5'**. Multiple booths are strategically located near the oven to accommodate coating in various colors efficiently. Jobs with a maximum length of **40 feet** can be coated and seamlessly transferred to the oven for curing.





ORGANIZATION CHART



OUR FACILITIES

IN LAB TESTING EQUIPMENTS



HOT AIR OVEN



TTR MACHINE



OUR FACILITIES

IN LAB TESTING EQUIPMENTS



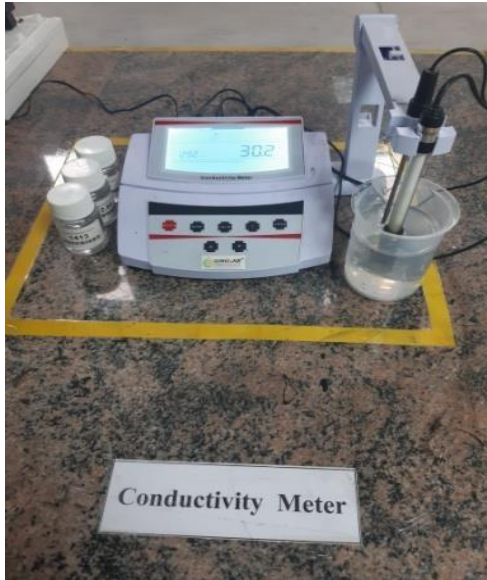
Conductivity Meter

pH Meter

Gloss Meter

Conical Test Kit

Impact Test



OUR FACILITIES

GENERATOR BACK UP:



BENEFITS

Quick, efficient, and automatic distribution of power.

Peace of mind that employees and company are safe during emergencies.

Uninterrupted use of heating and PLC systems, electronics and appliances.

Comfort and safety during Power shutdown.

OUR FACILITIES

COMPRESSOR:



BENEFITS

Controls and actuators, spraying coatings, cleaning,

OUR FACILITIES

AMENITIES:



LIST DETAILS

In – House LAB (All Testing equipment's)
Generator Back Up.

GAS Bank.

Centralized Compressor.

Fork Lift, Doc-Lever.

ED COATED COMPONENTS



POWDER COATED COMPONENTS



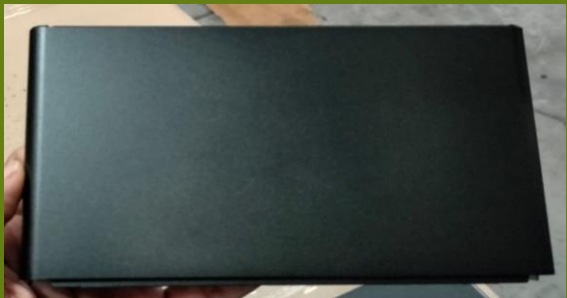
POWDER COATED COMPONENTS



ED + POWDER COATED COMPONENTS



COATED COMPONENTS



Customer Reference





Thank You!

OEM Approved By

